



Works when you do

# GeoMax General Catalog

Explore the GeoMax portfolio



Scan to visit  
**GeoMax website**



**geomax-positioning.com**

©2025 Hexagon AB and/or its subsidiaries and affiliates. All rights reserved.

# This is GeoMax

Serving the world with a local approach



At GeoMax, part of Hexagon, we have grown as a customer-centered company offering solutions that make data collection and management easier, which means getting more done faster on construction projects. We gain customer confidence by understanding their everyday requirements and environments. This is shown in the quality and performance of our product and service range – all backed by local support and training.

We stay close to our customers as a key source of inspiration for improvement and innovation. More than workflow providers, we are partners in growth who know that propelling dealer and customer success is also the path to our own.

Our visionary approach to software and data management is a key component of our success: X-PAD software enables access to a complete data ecosystem to digitize and streamline daily construction surveying tasks. Designed to facilitate quick adoption into existing everyday workflows and accelerate them, X-PAD is both intuitive and customizable.

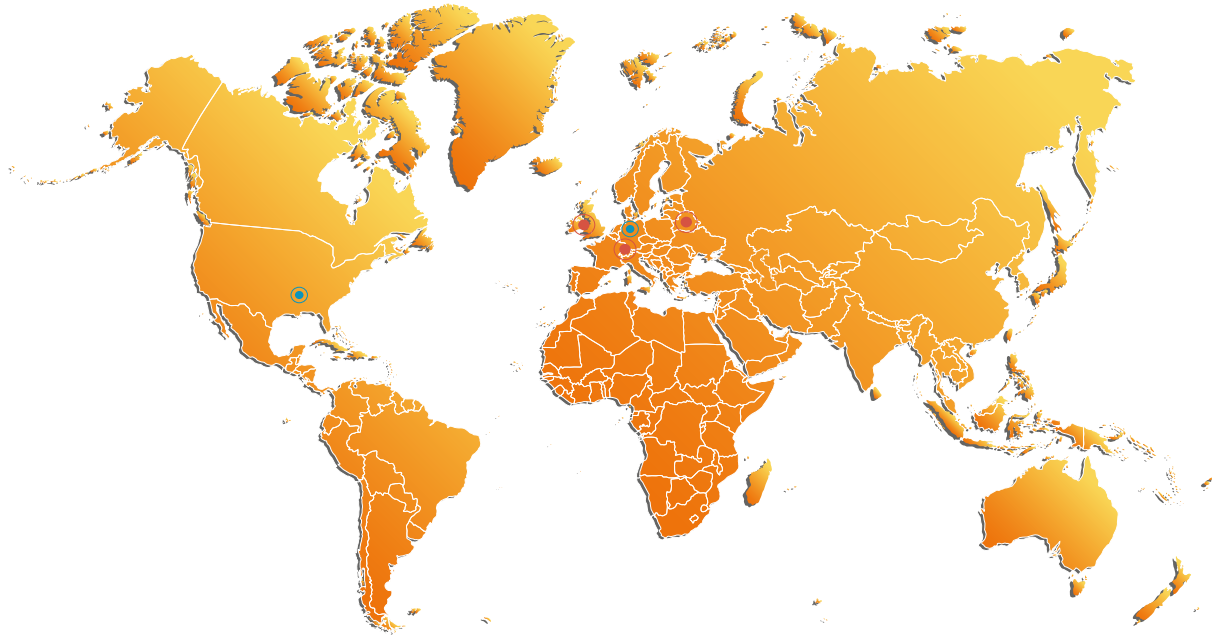
As part of Hexagon, a global leader in geospatial solutions, GeoMax benefits from extensive resources and partnerships to provide ever-expanding offerings, including integrations with Reality Capture solutions. Topped off by our local presence where expertise meets accessibility and support, GeoMax is positioned to uniquely serve our customers around the world.

\*Hexagon (Nasdaq Stockholm: HEXA B) has approximately 24,500 employees in 50 countries and net sales of approximately 5.4bn EUR.

## Mission

We grow with our customers by offering an expanding and connected data ecosystem that propels our mutual success. At the core is our centralized construction surveying software connecting sensors, teams, and workflows. We are accessible to our customers, listening to feedback and leveraging our global resources to meet local needs and make daily work easier.

# Works when you do

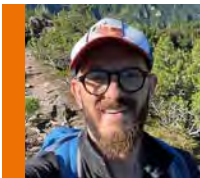


**3 Strategic partners**

**2 Operational centers**

## 270 Distributors

Our 270 specialist dealers will work with you to provide surveying and construction solutions that meet your needs, help you work efficiently, and support you with dedicated service and training.



*We were looking for a new, precise, cutting-edge tool for an important tracking contract. After a search among the competitors, we conducted a test at a GeoMax Dealer, and the choice was straightforward!*

Samuele and Giacomo Sacchi, from Studio Sacchi



*I purchased my first piece of GeoMax equipment about 10 years ago. I actually own all GeoMax equipment now and I am extremely happy with it thus far.*

Matt Filus, Certified Floodplain Manager at the Excelsior Group



*GeoMax's ecosystem makes our work in the field much easier. With the hardware and software solutions, we gain versatility in projects, agility in decision-making, real-time, and in the palm of our hands. Undoubtedly the best choice!*

Geotopsul, Surveying Company

# Services & Support

Experienced, dedicated, multilingual



We'll be there when problems arise so your work can continue as planned with minimal downtime. And with product training sessions, online resources and more, we're also there to help advance your knowledge and skills so you can succeed as a GeoMax partner.

Our customers are located across the globe and so is our support. The experienced, dedicated, and multilingual teams at our worldwide maintenance and service centers provide fast response times and work with you until your problem is solved.

Additionally, our Total Care Shield Warranty covers repairs and maintenance, recalibration, cleaning and servicing, software updates and functional and safety testing. You can be confident both in the quality of your GeoMax product and the expert service you'll get to keep your products working properly.

GeoMax doesn't want anything to stand between our customers and training opportunities, which is why we've developed, and will continue to release, on-demand Expert Webinars published on our website and available to watch anytime, from anywhere.



Our vision of support is direct and personalized. The GeoMax Academy offers global and local trainings with customized programs for our partners and customers. We share our expertise and listen to feedback so we can continue developing products that meet customer needs and improve the competitive advantages of our instruments and solutions.

# Quality Management

Quality and performance are highest priority



At GeoMax, our highest priority is the quality and performance of our solutions to ensure your equipment works when you do at all times. Our products are designed and produced to withstand extreme environmental conditions – no failure or poor functioning in intense heat, snow, hail or rain.

Our commitment to quality is internationally recognized and certified with the same high Swiss quality standards as our parent company, Hexagon. GeoMax AG is ISO9001 Quality Management System and ISO14001 Environmental Management System certified by the Swiss Association for Quality and Management Systems SQS and the International Certification Network IQNET.

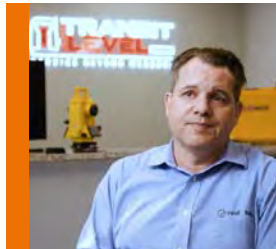
We also extend this quality commitment to safety and sustainability. GeoMax solutions are fully compliant with Conformité Européenne (CE), the Restriction of Hazardous Substance Directive (RoHS) and Waste from Electrical and Electronic Equipment (WEEE) regulations.



# GeoMax Favorites

Customer satisfaction drives us

## X-PAD Suite



*X-PAD software is a fantastic solution for a lot of our customers - it's a very powerful surveying platform and does so many different things but it also makes the day-to-day surveying process easy, so it's accessible for anybody.*

Chris Van Tassel, Transit and Level Clinic

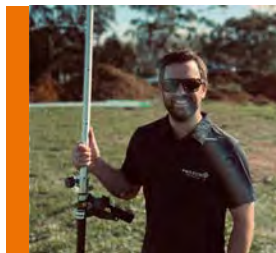
## Zoom95



*I am entirely satisfied with the Zoom95 because the overall performance is excellent. The optics are outstanding; the operation is simple, easy to understand, and brilliant in combination with X-Pad Ultimate. I wouldn't do anything without it again.*

Maximilian Hohl, Surveyor at Aurich & Hallbauer

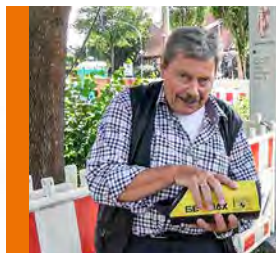
## Zenith60



*When they build the survey standard cover off-center to the mark and you can't level the pole... but you remember your GNSS rover has an IMU in it!*

Josh Godwin, Cadastral Surveyor

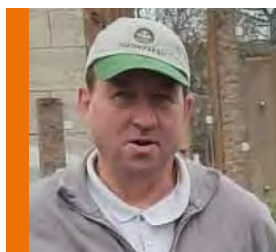
## Zeta125



*The Zeta125 is small, user-friendly and if I were an entrepreneur, I would buy this pipe laser before any other!*

Heinz-Günter Weigt, owner of H.G. WEIGT VERMESSUNGSTECHNIK GmbH, Authorized GeoMax Dealer / construction expert with 40 years

## Zone Series



*My favorite feature of the Zone60 DG Laser Rotator is the two-axis grade setting option. Not having to calculate the grades myself makes work a lot faster and more accurate.*

Rolf Duerr, Landscape gardener

# Content

Explore our many solutions

**08**

Software



**16**

Total  
Stations



**28**

GNSS  
Receivers



**36**

Field  
Controller



**38**

Levels



**42**

Laser Rotators  
& Receivers



**50**

Pipe Lasers



**54**

Cable Locators



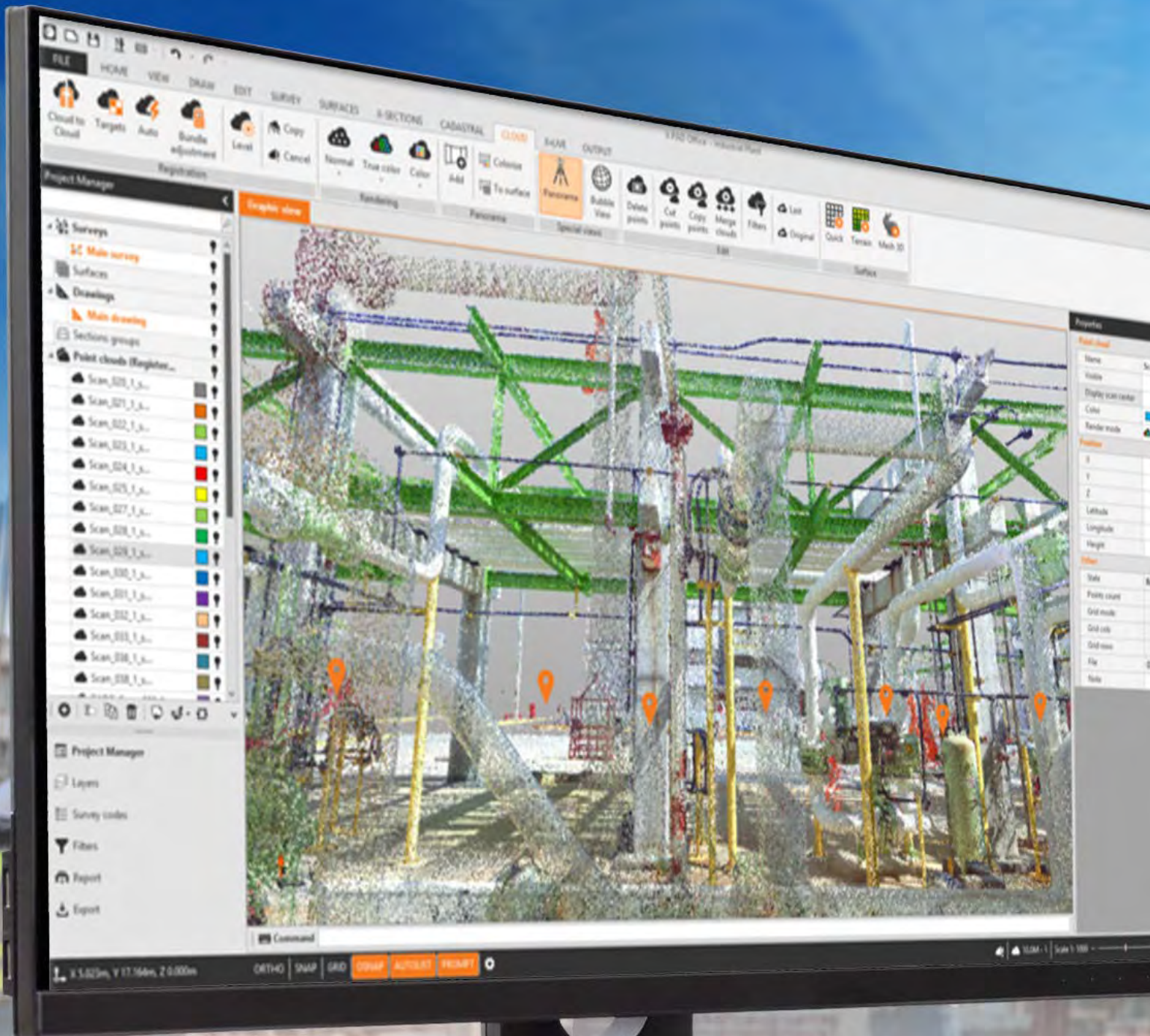
**58**

Accessories  
& Quality  
Management



# GeoMax Software

GeoMax software solutions cover a wide range of professional surveying and construction applications. They are aligned with the workflows to meet local needs and guide you through your tasks quickly and intuitively.



**Works when you do**



ms, 329, 1, job1
<input checked="" type="checkbox"/>
6, 176, 240
Free value
6.634m
19.811m
6.375m
1.770'0.000'
W 7'0'0.000'
5.000m
Engineered
23 243 505
<input checked="" type="checkbox"/>
8152
3471
10/01/2019 10:00:00
Material
GCN

# X-PAD Ultimate

The Ultimate solution in the field

Scan to learn more about  
**X-PAD Ultimate**



Our fully-featured X-PAD field software, X-PAD Ultimate, is the world's first Android field data collection software. It's available in two tailored versions: one for surveyors and one for construction professionals. Designed with the latest technology, this software is easy to use and maintenance updates are always included at no extra cost.

Optimized for field controllers and other mobile devices, X-PAD Ultimate includes a CAD function to prepare and adjust your data in the field. Additionally, you can load and display IFC files, hide and isolate elements and extract points, lines, surfaces and cross-sections for stakeout and checking operations. Equipped with the latest technology, like a 3D viewer, data integration in maps, a camera for augmented reality and voice command functions, you'll have the digital tools to make the most of your time in the field.

You can customize your software with a variety of modules that fit all types of projects and easily integrate your work into the X-PAD ecosystem of software solutions.

## X-PERT Service and Protection

We listen to our customers and continually work to improve our software, keeping the perfect balance between a clear interface, straightforward workflows and high functionality. Then we provide those improvements to you through our X-PERT service software updates. Additionally, with SHIELD, you receive maintenance during warranty, license transfer and additional support at no cost.



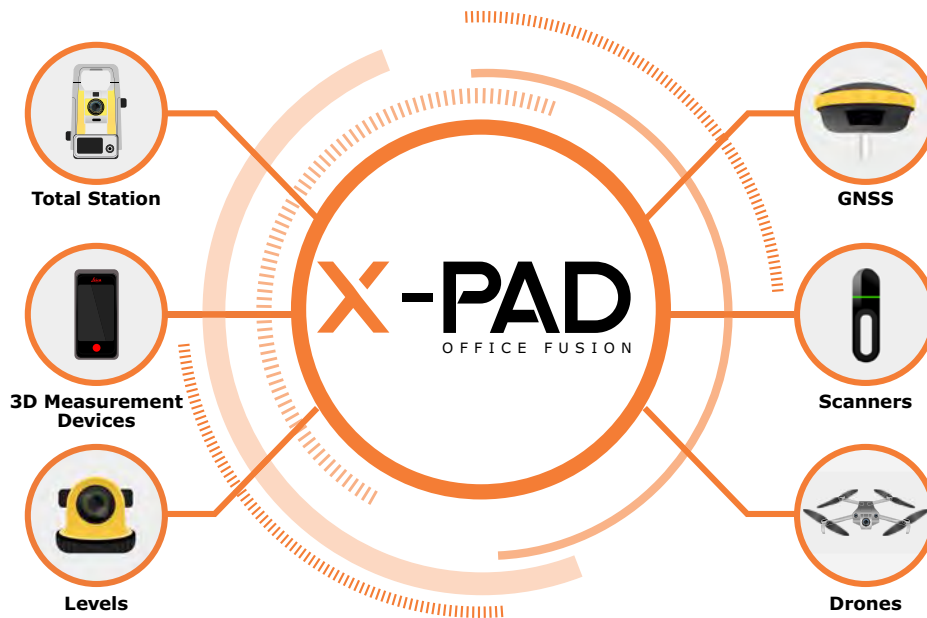
- Provides all software releases during the purchased period automatically
- Delivered with the initial X-PAD Ultimate order
- Free of charge for the first year and can be renewed and purchased after license expires



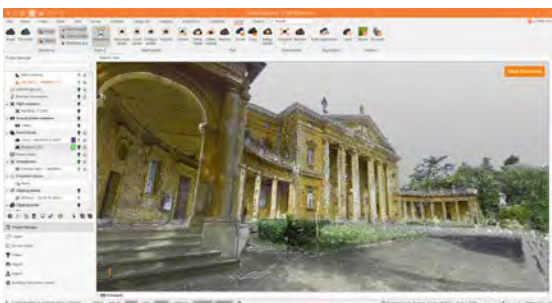
- Covers software maintenance (bug fixing)
- Always comes with all X-PAD Ultimate products free of charge

# X-PAD Office Fusion

Multiple sensors, One Platform



X-PAD Office Fusion is the ultimate desktop software for integrating geospatial data from TPS, GNSS, scanners, and other sensors into a unified environment. Designed for surveyors and construction professionals, it combines user-friendly operation with advanced tools to meet all your geospatial needs. A unique market offering, X-PAD Office Fusion is the single software solution for managing geospatial data from multiple sensors, customized to address local requirements.



## X-SCAN Next module

The X-SCAN Next module manages point cloud data, with several options to improve the results according to the specific type of work and target recognition. Orthophoto, cross-sections and surfaces can be generated in only a few intuitive steps.

Scan to learn more about  
**X-PAD Office Fusion**



# X-PAD 365

One platform, endless services



X-PAD 365, the web-based GeoMax cloud platform, was created to address data management and collaboration challenges surveyors and construction professionals meet every day.

It lets you access, store and share data anytime, anywhere to stay connected 365 days a year.

Upgrade your teamwork with the Collaborative Survey and Stakeout feature that allows several users to work on the same surveying or stakeout project together, sharing real-time surveyed points and drawings in X-CHAT and immediately seeing their progress.

And with automatic and manual backup for X-PAD Ultimate, you will never lose your data.



Scan to learn more about  
**X-PAD 365**

# X-PAD 365 Packages

Tailored to meet your needs

	BASIC	PROFESSIONAL	ENTERPRISE
<b>PRODUCT REPOSITORY</b> Access all product-related information, e.g. firmware versions, user manuals.	X	X	X
<b>ASSET MANAGER</b> Register equipment, software and services.	X	X	X
<b>NOTIFICATIONS</b> Get informed about news on registered assets.	X	X	X
<b>VIRTUAL TRAINING ACADEMY</b> Access trainings material, webinars and support documentation.	X	X	X
<b>FILE MANAGER</b> Store, manage and exchange files.		X*	X*
<b>BACKUP AND RESTORE</b> Manual and automatic backup for X-PAD Ultimate and X-PAD Ultimate GO.		X	X
<b>X-CHAT</b> Exchange data and communicate between office and field.		X	X
<b>COLLABORATIVE SURVEY</b> Work on the same survey in real-time.		X	X
<b>MULTIPLE USER MANAGEMENT</b> One administrator can create up to five sub-users using common storage area.			X

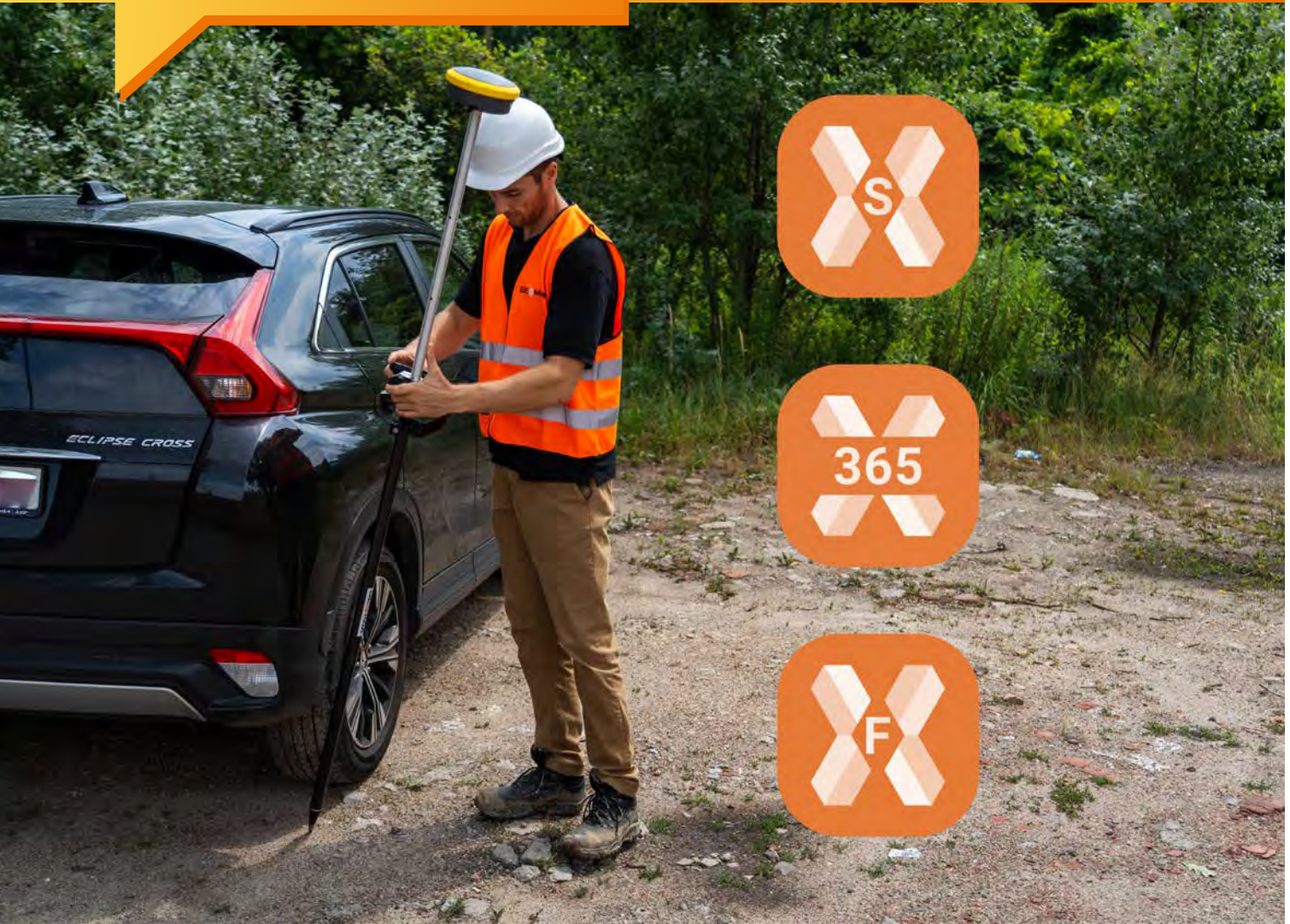
\* Professional: 10 GB space / Enterprise: 100 GB space



All licenses are annual licenses that will be automatically renewed. Besides the options listed above, your X-PAD 365 can be enhanced with additional functionality, including additional sub-users, storage capacity upgrades, and more.

# Collaborate on survey and stakeout

## PRO TIP



Initiate a collaborative session through X-PAD 365 and save time by working together on a survey project. For example, capture and integrate data from multiple Zenith60 Pro smart antennas into the Zenius08 field controller running X-PAD Ultimate software, allowing everyone to view measurement progress in real time. Once the data has been saved in 365, edit and add points to plans in an office with X-PAD Office Fusion. These new plans are immediately available to the site crew for stakeout. With these collaborative tools, crew members progress through sites quickly and efficiently, missed points or double measurements are eliminated and stakeouts become a seamless part of the process.

# X-PAD CalMaster

Efficient calibration for all your lasers



Scan to learn more about  
**X-PAD CalMaster**



Laser calibrations are rarely quick and easy. X-PAD CalMaster significantly reduces calibration time, enabling highly accurate calibration of construction lasers without the need for extensive training.

The systems runs on the user-friendly and intuitive X-PAD software. Holding its promise, X-PAD CalMaster guides users step-by-step through the measuring workflow and supports them with instructions for accurate and fast measurements.



**GEOMAX  
ZONE SERIES**

**GEOMAX  
PIPE LASERS**

**3RD PARTY  
LASERS**

**3RD PARTY  
PIPE LASERS**

**3RD PARTY  
LINE/POINT  
LASERS**

Issue calibration report	<input type="checkbox"/>	<input type="checkbox"/>	<input type="checkbox"/>	<input type="checkbox"/>	<input type="checkbox"/>
Check plane laser beam	<input type="checkbox"/>	<input type="checkbox"/>	<input type="checkbox"/>	<input type="checkbox"/>	<input type="checkbox"/>
Check spot beam	<input type="checkbox"/>	<input type="checkbox"/>	<input type="checkbox"/>	<input type="checkbox"/>	<input type="checkbox"/>
Check grade 0.5%	<input type="checkbox"/>	<input type="checkbox"/>	<input type="checkbox"/>	<input type="checkbox"/>	<input type="checkbox"/>
Check grade 1.0%	<input type="checkbox"/>	<input type="checkbox"/>	<input type="checkbox"/>	<input type="checkbox"/>	<input type="checkbox"/>
Check grade 1.5%	<input type="checkbox"/>	<input type="checkbox"/>	<input type="checkbox"/>	<input type="checkbox"/>	<input type="checkbox"/>
Guided calibration	<input type="checkbox"/>	<input type="checkbox"/>	<input type="checkbox"/>	<input type="checkbox"/>	<input type="checkbox"/>
Live mode	<input type="checkbox"/>	<input type="checkbox"/>	<input type="checkbox"/>	<input type="checkbox"/>	<input type="checkbox"/>

# Total Stations

Whether working in a team or solo, discover our easy-to-use total stations for boosting daily performance in surveying, engineering and construction applications.



# Zoom95 Series

The perfect one-person,  
robotic total station



If you are in charge of surveying for construction projects or purchasing devices for your company, this one-person, robotic total station is made for you. The prism can be quickly located, tracked and it stays locked with the built-in STReAM360 technology.

Combined with our X-PAD field software, which is open to 3rd-party field controllers, Zoom95 provides a full range of efficient choices. The X-PAD software suite is developed in collaboration with customers and perfectly matches the Zoom95 workflows. It is so easy to use that no extra training is needed.

This solution is not only economical, with no maintenance cost, but your data is digitalized, secure and easy to access.

Scan to learn more about the  
**Zoom95 Series**



# Digitize your construction workflow

PRO TIP



## Make the move to digital on the construction site by combining GeoMax's hardware and software solutions.

Upload digital building plans into X-PAD Ultimate running on a Zenius08 field controller tablet for a fully integrated experience on site. X-PAD Ultimate Build has intuitive interfaces tailored to building construction, making it faster and easier to locate points from plans with your Zoom95 robotic total station. This digital solution also eliminates doubt – edits to digital plans are updated everywhere, so you can be certain the plans you see on site are current.

# Zoom75 Series

The right solution to digitize your site



The Zoom75 and X-PAD solution was developed to meet the demands of both novice and experienced surveyors. You have the choice to use two people and the onboard software, or a single surveyor with a field controller of choice or a phone. Both guarantee fast and convenient work with CAD data. This robotic total station's big screen, optional long-range Bluetooth handle and high performing processor add to the easy, intuitive workflow of X-PAD software. X-PAD provides a familiar user experience, reducing the need for training. User-friendliness and flexibility make it easy to start digitizing your construction site.

Scan to learn more about the  
**Zoom75 Series**



# X-Pole

When TPS meets GNSS



The full integration of X-Pole with X-PAD field software lets you toggle between both measurement modes. Decide with the press of one button if you want to change from TPS to GNSS mode. For example, easily switch to GNSS mode when some points cannot be measured with TPS due to limited prism visibility. Once those points are measured, change back to TPS mode. This enhances the efficiency of the system by eliminating the need for cumbersome and time-consuming station setups.

Scan to learn more about the  
**X-Pole**



# Measure flexibly and efficiently

PRO TIP



## Switch between TPS and GNSS measurement modes with the fully integrated X-Pole and X-PAD Ultimate field software.

When structures like piles interfere with the line of sight from your Zoom75 robotic total station to your prism, easily switch to GNSS mode with the push of a button in the field software's X-Pole module and complete the measurements with your GNSS smart antenna. Move flexibly and freely around the site, logging and viewing all data on your Zenius08 field controller. Once those points are measured, easily change back to TPS mode. This eliminates difficult and time-consuming station setups, enhancing your overall efficiency.

# Zoom50 Series

Simplicity meets performance



With proven accXess EDM technology, the Zoom50 features an intelligent distance measurement engine designed for outstanding range, speed, and accuracy even under tough conditions. With the Polar option, the TPS can operate at a temperature as low as -30 °C.

The longer measurement range means a wider operational coverage and significant less time lost with switching setups. The new PowerLock protection mechanism prevents use by unauthorized persons and makes it hard to steal.

Additionally, the Zoom50 offers a full VGA color touch screen, built-in Bluetooth, USB port, and a full-featured application package.

Scan to learn more about the  
**Zoom50 Series**



# Zoom45 Series

The manual total station for surveying and layout tasks



## High accuracy, intuitive operation and easy data-flow for construction layouts

The Zoom45 is a manual total station tailored for your construction site survey and stakeout applications, with fast point measurements, simple operation and an intuitive interface with a 5-inch display. This allows everyone to work at the construction site with the Zoom45.

Connecting the Zoom45 manual total station with X-PAD Ultimate software provides an advantage in visualizing data and streamlining field workflows, catering to challenging work conditions and multi-operator teams.

Scan to learn more about the  
**Zoom45 Series**



# Zoom10

More convenience and smoother workflow



To make your job easier, intuitive onboard software runs on two built-in displays. The manual total station Zoom10 ensures quick and accurate reflectorless measurement up to a range of 350 m and angular accuracy of 2". In combination with X-PAD software, the Zoom10 seamlessly integrates with your workflow to combine and process data from every sensor into one platform.

Combined with X-PAD Ultimate GO field software, you get a user-friendly and cost-effective package that operates in the most challenging work environments for the best performance-to-value ratio.

Scan to learn more about the  
**Zoom10**



# Zipp02

Digital theodolite for all your general construction tasks



Scan to learn more about the **Zipp02**



With vertical compensation and 2" accuracy, the Zipp02 provides you with the precision required for your most demanding jobs at an affordable price without adding complexity. Various display modes, hold and set zero for horizontal angle, a variation of measurement units, and simple distance measurement via stadia lines all make for easy operation with only six keys. Visible laser plummet lets you set up over a point faster and easier than ever. The Zipp02 is the tool of choice when it comes to checking angles, alignments, grade work and short-range leveling.

## TECHNICAL DATA

Precision	2"
Magnification	30x
Compensator system	Automatic vertical compensator
Display	User set on/off
Keypad	Double side large character back-lit LCD
Keys	Numeric with 3 programmable functions
Operation period w/o laser plummet	6 one-touch button functions
Live mode	36 h

# GeoMax TPS Comparison Chart

	Zoom10	Zoom45	Zoom50
<b>ANGLE MEASUREMENTS</b>			
Accuracy	2"	2", 5"	1", 2", 5"
Display resolution	1", 5", 10"	0.1"	1"
Method	Absolute encoding	Absolute, continuous	Absolute, continuous, diametrical
Compensation	Dual axis	Quadruple axis	Quadruple axis
<b>TELESCOPE</b>			
Type	neXus	neXus	accXXess
Magnification	30x	28x	30x
NavLight™ Range	-	-	-
NavLight™ Accuracy	-	-	-
<b>DISTANCE MEASUREMENTS - PRISM</b>			
Range	3,000 m	5,000 m	3,500 m (Std. Prism) / 10,000 m*
Accuracy	3 mm + 2 ppm	2 mm + 2 ppm	2 mm + 2 ppm
Typ. time (fast/standard)	1/1.5 sec	1.1/1.4 sec	1/2.4 sec
<b>DISTANCE MEASUREMENTS - NON-PRISM**</b>			
Range	350 m	500 m	500 m / 1,000 m
Accuracy	3 mm + 2 ppm	3 mm + 2 ppm (<200 m); 5 mm + 3 ppm (>200 m)	2 mm + 2 ppm (<500 m); 4 mm + 2 ppm (>500 m)
Footprint	8 x 20 mm @ 50 m	12 x 24 mm @ 50 m	8 x 20 mm @ 50 m
<b>INTERFACE</b>			
Keyboard	Two full alphanumeric	Two numeric***	Two full alphanumeric***
Display	B&W, high res., 160 x 96 pixels with backlight; 6 lines	Color & Touch, 5" WVGA 800x480 pixel with LED backlight	Color- & Touch; 3.5" Q-VGA 320x240 pixel with LED backlight, 10 lines
Data recording	Internal memory; 20'000 points	Internal memory, 16 GB	Internal memory, 50'000 points
Bluetooth	yes	yes	yes
Removable memory	SD card	USB stick	USB stick
Ports	Serial; USB mini	USB mini	Serial; USB; and external power
WLAN		yes	
<b>SOFTWARE</b>			
Operating System	Embedded CE	Android 11	Embedded CE
Open for 3rd party SW	Open to X-PAD Ultimate GO	-	-
Basic package	-	Fully flexible	yes
Advanced package	-	Fully flexible	COGO; Ref. Arc; Road 3D, Traverse; PIN/PUK
<b>PHYSICAL SPECIFICATIONS</b>			
Weight	Approx. 5.5 kg with battery & tribrach	5.1 kg w/o battery and tribrach	4.2 - 4.5 kg w/o battery and tribrach
Operating temperature	-20°C - 50°C	-20°C - 50°C	-20°C - 50°C (optional Polar Version -30°C - 50°C)
Protection class	IP54	IP55	IP55
<b>POWER SUPPLY</b>			
Type/Operating time****	removable; 10 hours	removable, up to 8 hours	removable; 16 hours
<b>PLUMMET</b>			
Type	Laser point, adjustable brightness	Laser point, adjustable brightness	Laser point, adjustable brightness
<b>MOTORIZATION</b>			
Scout -360° Prism Search: Range			
AiM - Prism fine aiming: Range / Accuracy			
<b>TRack -Prism following</b>			
Range			
Max. speed			

\* Long mode

\*\* Optimal conditions to Kodak Grey Card (90% reflectivity)

\*\*\* Optional

\*\*\*\* Single measurement every 30 seconds, at 25°C. Battery time maybe shorter, depending on conditions

\*\*\*\*\* X-PAD, FieldGenius, Carlson SurvCE

# Works when you do

## Zoom75

1", 2", 3", 5"  
 0.1", 1", 5", 10"  
 Absolute, continuous, diametrical  
 Quadruple axis

accXXess  
 30x  
 5 m - 150 m  
 5 cm at 100 m

3,500 m (Std. Prism) / 10,000 m\*  
 1 mm + 1.5 ppm  
 0.8/2.4 sec

500 m / 1,000 m  
 2 mm + 2 ppm (<500 m); 4 mm + 2 ppm (>500 m)  
 8 x 20 mm @ 50 m

Two full alphanumeric\*\*\*  
 Color- & Touch; 5" WVGA 800x480 pixel with LED backlight  
 Internal memory, 2 GB  
 internal & long-range Bluetooth handle  
 SD card / USB stick  
 Serial; USB; USB mini; external power; WLAN  
 yes

Open Windows CE  
 yes  
 Fully flexible\*\*\*\*\*  
 Fully flexible\*\*\*\*\*

5.0 - 5.3 kg w/o battery and tribrach  
 -20°C - 50°C  
 IP55

removable; Up to 8 hours

Laser point, adjustable brightness

-  
 1000 m at round prism / 1"  
 800 m at round prism  
 90 km / h at 100 m

## Zoom95

1", 2", 3", 5"  
 0.1"  
 Absolute, continuous, diametrical  
 Quadruple axis

accXXess  
 30x  
 5 m - 150 m  
 5 cm at 100 m

3,500 m (Std. Prism) / 10,000 m\*  
 1 mm + 1.5 ppm  
 0.8/2.4 sec

500 m / 1,000 m  
 2 mm + 2 ppm (<500 m); 4 mm + 2 ppm (>500 m)  
 8 x 20 mm @ 50 m

Two full alphanumeric\*\*\*  
 Color- & Touch; 5" WVGA 800x480 pixels with LED backlight  
 Internal memory; 2 GB  
 internal & long-range Bluetooth handle  
 SD card / USB stick  
 Serial; USB; USB mini; external power; WLAN  
 yes

Open Windows CE  
 yes  
 Fully flexible\*\*\*\*\*  
 Fully flexible\*\*\*\*\*

5.0 - 5.3 kg w/o battery and tribrach  
 -20°C to 50°C  
 IP55

removable; Up to 8 hours

Laser point, adjustable brightness

300 m at round prism  
 1000 m at round prism / 1"  
 800 m at round prism  
 90 km / h at 100 m

# GNSS Receivers

Ensure ultimate reliability with GeoMax GNSS systems under the most severe conditions. Providing true cost-effectiveness, these systems are equipped with the latest GNSS technology in the field to increase your productivity and take your performance to the next level.



Works when you do



# Zenith60 Pro Series

Redefining accuracy and reliability



For surveyors and construction professionals who want to get the job done on time and with confidence, the advanced Zenith60 Pro GNSS smart antenna ensures precise, accurate, and hassle-free measurements.

The new, powerful RTK rover provides reliable data and supports a streamlined workflow even in challenging conditions. The Zenith60 Pro's tilt compensation makes it possible to measure otherwise inaccessible points and increases your measurement speed.

Zenith60 Pro is fully integrated with the GeoMax ecosystem, providing a comprehensive solution that works when you do. Zenith60 Pro connects with GeoMax total stations and innovative X-PAD field software that enables an efficient and flexible workflow. X-PAD Software provides a simple user experience without extra software maintenance costs.

Scan to learn more about the  
**Zenith60 Pro Series**



# Zenith16 Series

Top-performing technology, smart investment



Top performing technology and a remarkable price-performance ratio meet in the Zenith16 GNSS receiver, making it a strong investment. The Zenith16 GNSS smart antenna provides fast and accurate measurements, enabling you to efficiently complete high-quality projects. Benefit from multi-frequency, multi-constellation tracking, access to precise point positioning (PPP), and fast convergence times for high accuracy with less downtime.

Experience the Zenith16's full potential when combined with X-PAD software and GeoMax field controllers, enabling an optimized workflow from the field to the office within a single, streamlined ecosystem.

Additionally, you'll join the GeoMax family, including the strong network of support and training designed to ensure you get the most value out of your product through its lifetime.

Scan to learn more about the  
**Zenith16 Series**



# Zenith06 Series

Simple, efficient and lightweight



Do you need accurate results without spending a lot of money on expensive and complex equipment? GeoMax has a solution: the Zenith06 smart antenna with X-PAD field software.

This simple rover and intuitive field software eliminate the need for extensive training to produce reliable outcomes. The software has an intuitive workflow, developed with input from customers, which allows for quick familiarization. The maintenance for X-PAD field software comes at no extra cost.

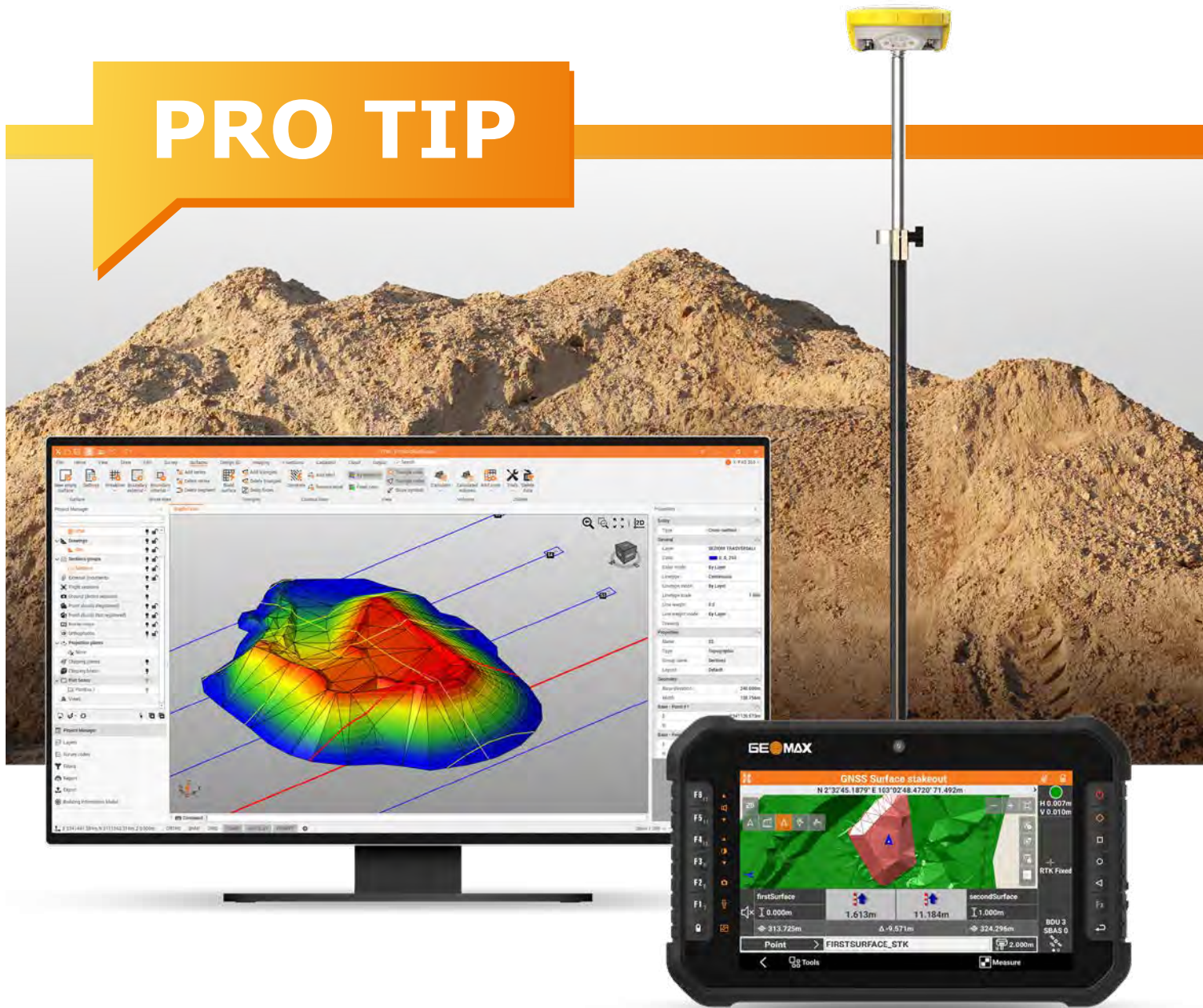
With its compact, lightweight design, the Zenith06 is easy to carry in the field and gentler on your body.

Scan to learn more about the  
**Zenith06 Series**



# Calculate volume and make plans for on-site materials

**PRO TIP**



**Integrate the Zenith16 antenna with X-PAD software for topographic surveys when you need to calculate the volume of on-site materials, like dirt piles, and plan for their relocation.**

The Zenith16 provides measurement data for accurate calculations and clear visualizations with X-PAD Ultimate software running on the Zenius08 field controller. Import into X-PAD Office Fusion to create detailed 3D drawings, keep up-to-date records and effectively plan material handling and relocations.

# GeoMax GNSS Comparison Chart



Zenith06



Zenith16



Zenith60 Pro

## RECEIVER SPECIFICATIONS

Signal tracking / Channels	Dual-frequency / 184	Multi-frequency / 555	Multi-frequency / 800+
GPS / GLONASS / Galileo / BeiDou / QZSS / NavIC/ SBAS	☐ / ☐ / ☐ / ☐ / ☐ / ☐ / ☐ / ☐	☐ / ☐ / ☐ / ☐ / ☐ / ☐* / ☐	☐ / ☐*** / ☐ / ☐ / ☐ / ☐ / ☐
L-band: TerraStar-C Pro correction service (PPP)	☐	☐ (opt.)	☐ (opt., 948901 only)
Tilt compensation	☐	☐	☐
Maximum positioning update rate	10 Hz	5 Hz, 20 Hz (opt)	20 Hz
Initialization time	typically 8 s	typically 4 s	typically 4 s
QR-iConnect	☐	☐	☐
X-Pole support	☐	☐	☐
RTK reference station functionality	☐	☐	☐

## ACCURACY (RMS)\*\*

Single baseline RTK	Horizontal: 20 mm + 1 ppm Vertical: 30 mm + 1 ppm	8 mm + 1 ppm 15 mm + 1 ppm	8 mm + 1 ppm 15 mm + 1 ppm
Network RTK	Horizontal: 20 mm + 1 ppm Vertical: 30 mm + 1 ppm	8 mm + 0.5 ppm 15 mm + 0.5 ppm	8 mm + 0.5 ppm 15 mm + 0.5 ppm
Static	Horizontal: 20 mm + 1 ppm Vertical: 30 mm + 1 ppm	3 mm + 0.5 ppm 5 mm + 0.5 ppm	3 mm + 0.5 ppm 5 mm + 0.5 ppm
TerraStar C-Pro (PPP)	Horizontal: - Vertical: -	< 25 mm < 50 mm	< 25 mm < 50 mm

## COMMUNICATION

Bluetooth®, USB, RS232, WLAN	☐ / ☐ / ☐ / ☐	☐ / ☐ / ☐ / ☐	☐ / ☐ / ☐ / ☐
Cellular modem	Controller internal	Controller internal	4G
UHF radio	-	SATEL (opt.)	SATEL (opt.)
Raw data / RINEX data logging / NMEA out	☐ / ☐ / ☐	☐ / ☐ / ☐	☐ / ☐ / ☐
Data recording	Controller memory	Removable microSD card	Removable microSD card and 8 GB internal memory

## PHYSICAL SPECIFICATIONS

Weight (without battery)	0.34 kg	1.14 - 1.18 kg	1.14 kg
Dimensions	135 x 81 x 31 mm	Height 95 mm, ø 198 mm	Height 75 mm, ø 166.8 mm
Operating temperature	-40°C to 65°C	-40°C to 65°C	-40°C to 65°C
Proof against water, sand and dust	IP67	IP68	IP68
Shock	Withstands 2 m pole topple over onto hard surface	Withstands 2 m pole topple over onto hard surface	Withstands 2 m pole topple over onto hard surface

## POWER SUPPLY

External power / Internal battery	USB-C / Internal, Li-Ion 6.12 Ah	Lemo® plug / Removable, Li-Ion 2.6 Ah	Lemo® plug / Hot-swappable, Li-Ion 3.4 Ah
Operating time (static/rover)	20 h	9 h / 6 h	12 h / 11 h

## WARRANTY

Standard warranty	1 year	1 year	1 year
Extendible warranty	Yes	Yes	Yes

\* Support of NavIC is incorporated and will be provided through future firmware upgrade.

\*\* Measurement accuracy and reliability are dependent on various factors including satellite geometry, obstructions, observation time, ionospheric conditions, multipath, etc. Figures quoted assume normal to favorable conditions.

Additional Hz uncertainty for tilt-compensated RTK: 2 cm up to 30° tilt.

\*\*\* Glonass L3 will be provided through future firmware upgrade.

GeoMax reserves the right to change, without notice, product offerings or specifications.

# GeoMax GNSS family

Designed to increase your productivity on site



# Field Controller Zenius08

The rugged Android tablet for field work in all conditions, all day long



From survey to layout to checks, make the most of your time on site by viewing and working with your GeoMax TPS and GNSS data on the rugged Zenius08 tablet.

Long workdays take you to challenging sites and deadlines don't wait for the weather. With the Zenius08, continue measuring even in harsh conditions thanks to a rugged, waterproof build, robust screen protection, 6 programmable hardware keys and easy operation. Stay powered through your longest days with 15-hour, exchangeable batteries.

Fitting into and improving your GeoMax field workflow, the Zenius08 paired with X-PAD Ultimate field software connects with GeoMax GNSS and total station sensors. Long-range Bluetooth connection frees you to move around the site with fewer setups, and 5G and Wi-Fi connection support data transfer and video calls with the office.

A rugged, durable design paired with high-performance processing power ensures the Zenius08 is a long-lasting instrument here to stay. Built with the latest Android technology, benefit from system upgrades that secure your investment into the future.

Works when you do



Designed for **X-PAD**

Zenius08 is fully integrated in the X-PAD ecosystem. Upload all your sensor data from X-PAD Ultimate via X-PAD 365 to build deliverables in X-PAD Office Fusion. In the office software, images taken with the Zenius08 camera can be processed, generating dense point clouds and even 3D orthophotos. As-built verification and streamlined data exchange provide certainty on site through checks that minimize rework and revisits.

Scan to learn more on the  
**Zenius08**



# Levels

GeoMax levels make it easy to complete your leveling tasks on time with the highest accuracy. Reliable and robust, even under challenging weather conditions.



**Works when you do**



# ZAL Series

Automatic levels covering all your needs



GeoMax ZAL automatic levels are dependable and durable tools, complemented by a full range of accessories providing great quality at an affordable value.



## ZAL300 Series

Professional/high precision  
Scan to find out more



## ZAL200 Series

Professional/standard tasks  
Scan to find out more



## ZAL100 Series

Economic choice/occasional use  
Scan to find out more





TECHNICAL DATA	ZAL330	ZAL324	ZAL232	ZAL220	ZAL132	ZAL124
Accuracy Standard deviation 1km double-run	1.2 mm	2.0 mm	1.9 mm	2.5 mm	2.0 mm	2.0 mm
Image	Erect	Erect	Erect	Erect	Erect	Erect
Magnification	30 x	24 x	32 x	20 x	32 x	24 x
Shortest target distance from instrument axis	0.8 m	0.6 m	1 m	1 m	1 m	1 m
Multiplication factor	100	100	100	100	100	100
Compensator working range/setting accuracy	± 15' / 0.3"	± 15' / 0.5"	± 15' / 0.5"	± 15' / 0.5"	± 15' / 0.5"	± 15' / 0.5"
Circular level sensitivity	10' / 2 mm	10' / 2 mm	8' / 2 mm	8' / 2 mm	8' / 2 mm	8' / 2 mm
Protection	IP57	IP57	IP56	IP56	IP54	IP54

# Laser Rotators & Receiv

Suitable for a wide range of applications, GeoMax laser rotators are true multi-purpose tools. They enable you to build simple and confident.



ers

Works when you do



# Zone Series

From start to finish, covering every need

Solidly built and dependable in any element, GeoMax laser rotators provide long-lasting operation and the flexibility of a full range of interchangeable accessories to accommodate your unique work preference - all at the best price-to-performance ratio.



- Error-free results
- 3 or 5 year warranty
- Interchangeable accessories
- Long-lasting operations
- Outstanding price-to-performance ratio
- Dependable in any element
- IP68/67 rating
- Solid-built design

## Zone75 DG

Sturdy, Solid, and Precise



Capable of operating at a speed of 15 rps (rotations per second), the Zone75 DG is stable over long-distance applications. The Zone75 DG not only gives you a reference for horizontal planes but also for slopes up to 15%.

Scan to learn more about the  
**Zone75 DG**



**Works when you do**



	ZRB90 BASIC	ZRP105 PRO	ZRD105 DIGITAL	ZRD105B
Working diameter	600 m / 2000 ft	900 m / 3000 ft	900 m / 3000 ft	900 m / 3000 ft
Detection window	80 mm / 3.1 in	70 mm / 3 in	105 mm / 4 in	105 mm / 4 in
Numeric readout height	-	-	90 mm / 3.5 in	90 mm / 3.5 in
Beam catching	-	-	-	<input type="checkbox"/>
Beam lock	-	-	-	<input type="checkbox"/>

# Zone60 DG

Fully-automatic dual grade laser

**5 YEARS**  
Premium Warranty



The Zone60 DG is a fully automatic grade laser ideal for construction workers who need the dependability and accuracy of a professional rotating grade laser on a daily basis. Align and monitor the laser plane automatically by using the GeoMax ZRD105B receiver.

Scan to learn more about the  
**Zone60 DG**



# Zone60 HG

Semi-automatic grade laser



Zone60 HG is made for exterior applications and is an ideal partner for concrete and formwork. With the slope function, time and temperature changes are frequently monitored to ensure accurate performance.

Scan to learn more about the  
**Zone60 HG**



# Zone40 T

One-button laser for outdoor leveling



The Zenith40 T is a simple, straightforward horizontal rotating laser with one touch to turn it on and start working. It offers the same high accuracy as the Zone60 models to support basic applications where high accuracy is required.

Scan to learn more about the  
**Zone40 T**



# Zone20 HV

Automatic multipurpose laser rotator



The Zone20 HV has the same specifications as the Zone20 H, plus the capability of vertical leveling. Pair up the Zone20 HV with a longer-range remote to match the jobsite.

Scan to learn more about the  
**Zone20 HV**



# Zone20 H

Automatic entry-level laser rotator



The Zone20 H, an economic and solid entry-level laser rotator, is designed with rugged housing and a straightforward interface. This laser offers all functions needed for regular and flexible use.

Scan to learn more about the  
**Zone20 H**



# MR240

Ideal for use with backhoes and mini-excavators



The GeoMax MR240's LED indicators show the position of a cutting edge in relation to the laser reference beam. The MR240 has three indicators in coarse mode, up to five in fine mode and is equipped with a magnet mount with extra strong rare earth magnets.

## Benefits

- Accurate grade information for all visual machine control applications
- Extra strong rare earth magnets
- Rugged and waterproof design

Scan to learn more about the  
**MR240**



# MR360R

Accurate grade information for all visual machine control applications



The GeoMax MR360R's large 360° detection windows pick up any rotating laser from any angle. The MR360R incorporates a built-in vertical indicator that monitors angle of the stick, signaling of the stick, and signals if it is plumb or under/over extended. The remote display shows direction arrows for plumbing up the dipper stick.

Its receiver has plumb LED indicator, and its magnet mount allows quick setup and easy movement from machine to machine. Clamp mount also available.

## Benefits

- 360° detection windows for total coverage
- In-cabin remote display for best control
- On operations
- No cables required

Scan to learn more about the  
**MR360R**



# Pipe Lasers

Expect precision, consistency, and durability with the compact, robust and fully-featured GeoMax pipe lasers.

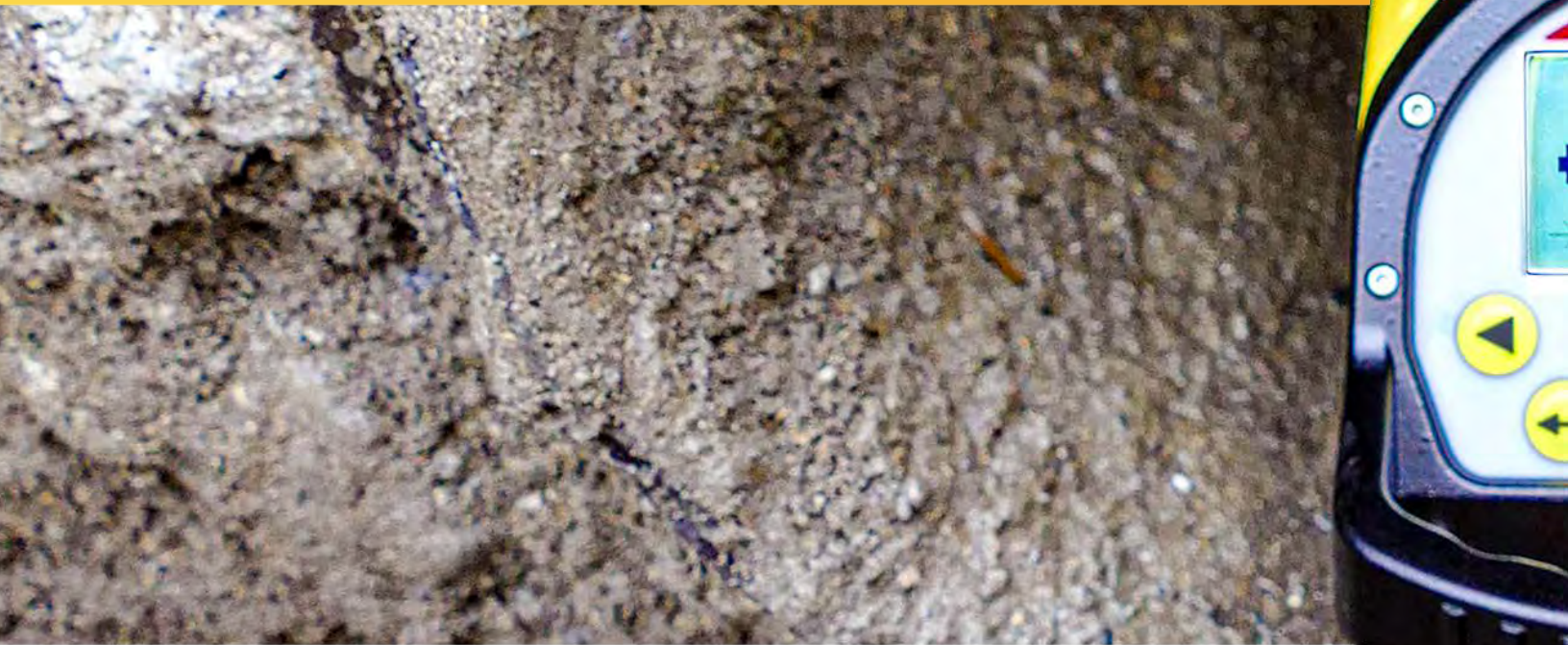


**Works when you do**



# Zeta125 Series

Designed for tough conditions



## Built to Last

The robust and rugged design of the Zeta series has a proven IP rating for water and dust – so no matter how quickly water and dirt appear, the pipe laser will keep on working. The Zeta series is also equipped with a durable cast-aluminum housing that uses die casts and extrusions for superior strength.



## Safe and Convenient

The Zeta125S pipe lasers make your work more convenient and safe. Thanks to the unique vertical alignment, which can be easily performed with the remote control and a laser receiver, there is no need to climb down into the trench.



## Stay Visible and Confident - Become Efficient

The Zeta125G series with the green laser beam provides four times higher visibility, superior leveling accuracy and allows greater working distances. These features help you achieve the best visibility in nearly any working condition at a distance up to 200 meters. You can confidently achieve maximum efficiency with this pipe laser.

# Works when you do



Scan to learn more about the **Zeta125 Series**



"S" Series vertical alignment and automatic dual axis compensation

Large digital display

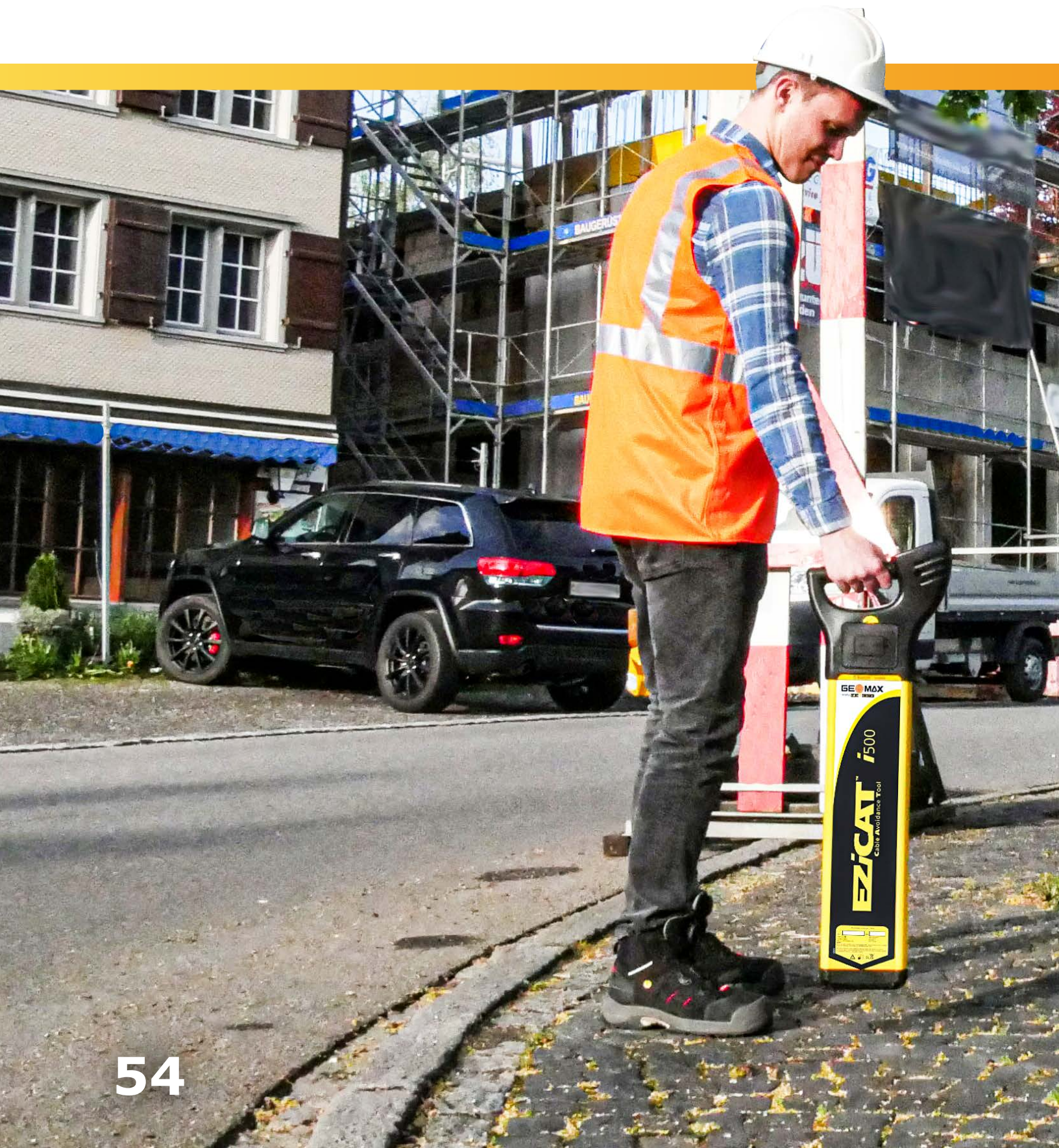


"S" Series vertical level

-10% to +40% inclination angle

# Cable Locators

Increase on-site safety, minimize human error, and save time and money.



**Works when you do**



# EZiSYSTEM

Increase safety, decrease costs



## EZiSYSTEM I-SERIES

Easily avoid buried cables and pipes before excavation work

The EZiSYSTEM cable avoidance equipment makes locating buried cables and pipes easy and efficient. There is no need to manually adjust the sensitivity. With the unique Automatic Pinpointing feature, users can simply press the trigger and start locating.



## EZiSYSTEM XF

Easily locate and trace buried utilities over greater distances

The EZiSYSTEM xf utility locating and tracing equipment makes locating buried utilities easy and efficient. The EZiSYSTEM xf has additional low frequencies enabling you to locate and trace utilities over longer distances and in congested environments.



# Works when you do

Every year, accidental strikes of buried cables and pipes injure site workers and damage equipment. As the complexity of large underground networks continually increases, knowing the location of buried cables and pipes prior to excavation work has never been so important.

	EZiCAT I500	EZiCAT I550	EZiCAT I750XF
Power	50 Hz model or 60 Hz model	50 Hz model or 60 Hz model	50 Hz model or 60 Hz model
Radio	15 kHz to 60 kHz	15 kHz to 60 kHz	15 kHz to 60 kHz
Auto	Power, Radio, 33 kHz	Power, Radio, 33 kHz	Power, Radio, 33 kHz
Transmitter mode	32.768 (33) kHz, 8.192 (8) kHz	32.768 (33) kHz, 8.192 (8) kHz	32.768 (33) kHz, 8.192 (8) kHz, 640 Hz, 512 Hz
Depth range	Line or Sonde 0.1 m to 3 m	Line or Sonde 0.1 m to 3 m	Line = 0.3 m to 3 m Sonde = 0.3 m to 9.99 m
Depth accuracy*	10%	10%	10%
Bluetooth®	-	-	Class 2 Low energy
GPS**	-	-	Chipset (1): u-blox®GPS; Type: GPS L1C/A; Accuracy (2): Horizontal Position 2.5 m Autonomous, 2.0 m SBAS, CEP; Start time: Cold 45 s typical, Aided 7 s typical, Hot 1 s typical
Memory capacity	-	-	64 MB
Battery	6 x AA Alkaline (IEC LR6) supplied	6 x AA Alkaline (IEC LR6) supplied	6 x AA Alkaline (IEC LR6) supplied
Battery operating time	40 h intermittent use (at 20 °C)	40 h intermittent use (at 20 °C)	40 h intermittent use (at 20 °C)
Dimensions (HxWxD)	760 x 250 x 85 mm	760 x 250 x 85 mm	760 x 250 x 85 mm
Weight with batteries	2.7 kg	2.7 kg	2.7 kg

\* Depth to an undistorted signal

\*\* (1) All data/information according to manufacturer u-blox®GPS; GeoMax Positioning does not assume any liability whatsoever for such information. (2) Accuracy is dependent upon various factors including atmospheric conditions, multipath, obstructions, signal geometry and number of tracked satellites.

## X-PAD VU - Cable locator software

X-PAD VU makes it easy to analyze activity data from EZiCAT cable locators. Simply download the data via Bluetooth® to see how the data survey was conducted and view issue reports of the collected data. This software can be used with the EZiCAT i750xf as well as previous models of EZiCAT I-Series.

The software allows you to analyze the following traceable data:

- GPS positioning of use
- Time and date of use
- Usage duration
- User identification
- Used detection modes
- Detected buried utilities
- Display of calibration dates

X-PAD VU allows a map view of the GPS-enabled locators, a detailed dashboard analysis, and the ability to issue a summary report as well as incident reports.



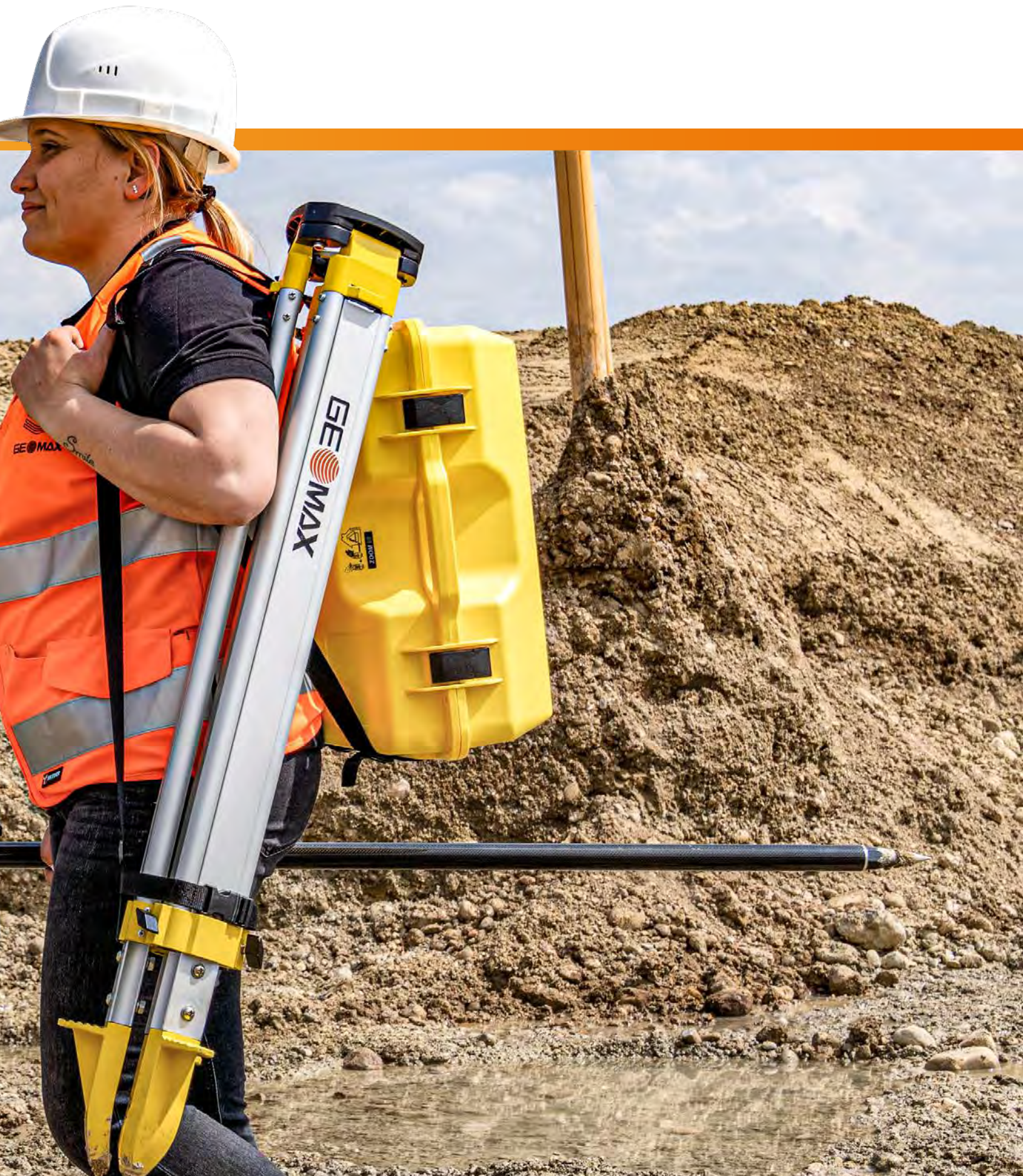
# Accessories & Quality Ma

GeoMax equipment is built to withstand any conditions you run into during your daily work.



# Management

Works when you do



# GeoMax Accessories

The perfect complement to every  
GeoMax solution



Scan to learn more about  
**GeoMax Accessories**



## ZTW100

- Wooden tripod
- Shoulder strap and side clamp screws
- Packaged length 104 cm, extended length to 166 cm
- Weight 5.7 kg



## ZTA100

- Aluminum light-weight tripod
- Shoulder strap and side clamp screws
- Packaged length 105 cm, extended length 167 cm
- Weight 4.5 kg



## CT160

- Aluminum tripod
- Shoulder strap and screws
- Range from 103 cm, up to 167 cm
- Weight 4.5 kg

# Works when you do

## ZCA102



- Reflector carrier
- Tubular level
- Optical plummet for precise positioning

## ZCA100



- Tribrach carrier for GNSS antennas

## ZCA101



- Tribrach carrier with stub for prisms

## ZPC200



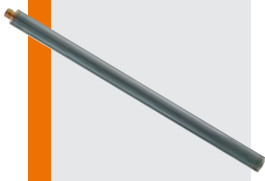
- Telescopic carbon fiber
- Aluminum pole for GNSS
- Extends to 230 cm

## ZPC201



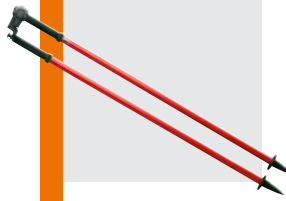
- Telescopic carbon fiber
- Aluminum pole for TPS
- Extends to 230 cm

## ZPC202



- GNSS pole
- Length 25 cm
- For mounting Zenith receiver on carrier as extension for base setups

## ZST100



- Telescopic
- Dual-strut pole support
- Suitable for all GeoMax poles and level staffs

## ZPT4



- Mini TPS pole
- Four screwable segments
- Extends to 30 cm
- With a pin

## ZHR08 Pole Holder Kit for Zenius08



- Pole clamp with quick release
- Zenius08 Tablet Holder
- Suitable for all GeoMax poles

# GeoMax Accessories

The perfect complement to every GeoMax solution

## ZRP1

360° prism with soft bag



## GRZ122

360° prism with 5/8" for GNSS antenna



## ZPR100 and ZTP100

- Circular prism with red holder 0-offset
- ZTP100 target plate for precise aiming over long distances is separately available for precise positioning



## ZTR101

Standard tribrach without optical plummet



## ZTR103

Standard tribrach with optical plummet

## ZTR201

High accuracy tribrach, torsional rigidity below 1", recommended for robotic and manual TPS from 1-3" accuracy

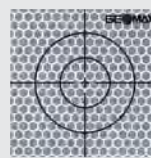
## ZMP101

Mini prism with tip



## ZTM100

- 6 x 6 cm
- For measurement of surfaces standard EDM



## ZDE100

Diagonal eyepiece



## ZST101

Tripod-star, for setting up of tripods on hard and slippery surfaces



## Li-Ion Batteries



- ZBA10 Li-Ion Battery 7.4 V for Zoom10
- ZBA201 for Zoom total stations and Zenith16/40, 2.6 Ah
- ZBA400 for Zoom total stations, 4.4 Ah
- ZBA401 for Zoom total stations, 6.4 Ah
- ZBA700 for Zenith60 Pro / Zenith60, 3.4 Ah
- GEB256 for Zenius08 tablet, 8200 mAh

## Chargers

- ZCH10 charger & ZAD10 adapter for ZBA10
- ZCH201 charger for ZBA201/400/401
- ZCH701 dual charger for ZBA700

## ZCB100

Backstrap for hard shell containers



## ZCT102

Hard shell container for two circular prisms, two carriers, two tribrachs



## ZCT207

Hard shell container for Zenith06 and accessories



## ZCT105

Softbag for accessories or field controller.



## GSS111

- Four-section telescopic staff
- Provides dual measuring faces
- Bar code and millimeter graduations

## GSS113

- Dual face high accuracy fiberglass leveling staff
- Length 3 m
- 1 section
- Barcode/E-Scale cm-graduation
- Circular bubble and handle

## CLR102

- Level staff 5 m
- 4 sections
- Front side with E-graduation
- Back side with mm-graduation



## FLEXI ROD

- Laser level staff with a mm-scale on front side
- Clamp for slide adapter, with bubble



**Distance meter (Prism Mode):** Laser class 1 in accordance with IEC 60825-1 resp. EN 60825-1; **Laser plummet:** Laser class 2 in accordance with IEC 60825-1 resp. EN 60825-1, **Distance meter (Non-Prism Mode accXess):** Laser class 3R in accordance with IEC 60825-1 resp. EN 60825-1

# Selection of our portfolio

We have more for you



X-PAD Ultimate



X-PAD Office Fusion



X-PAD 365



Total Stations



GNSS Receivers



Laser Rotators



Cable Locators



Field Controller



## Connect and share your success with us on social media

[geomax-positioning.com](http://geomax-positioning.com)

©2025 Hexagon AB and/or its subsidiaries and affiliates. All rights reserved.

At GeoMax, we love to see how you are succeeding with the help of our solutions. Follow us on Facebook, LinkedIn and Instagram, and tag us in your application posts so we can stay connected and inspired by your daily work.



GEOMAX Authorized Distribution Partner

0325 - 945287 enus

Copyright Hexagon AB.  
Illustrations, descriptions and technical specifications are not binding and may change.